

Dear customer. Thank you for your purchase, please read the following instruction carefully before using this product.

#### TECHNICAL DATA:

Product name	Solar LED STREET 15W
Dimensions	413x232x58 mm
LED Layout	40*SMD2835
Color temperature	4000K
Battery	Replaceable Li-ion; 7,4V / 5400mAh
Photovoltaic power	9.5Wp
Power consumption	15W
Luminous flux	1600lm
Lighting angle	140x70°
Durability of lighting time	35 000h
Tightness class	IP65
Installation height	3-5m
Motion sensor detection area	3-8m
Detection angle of motion sensor	120°
Warranty	24 months (12 months for battery)

#### PRODUCT FEATURES:



Solar powered



Automatic on/off light switching



Safe



Replaceable battery



Multifunctional



Zero electricity cost



PIR motion sensor



IP65 protection class

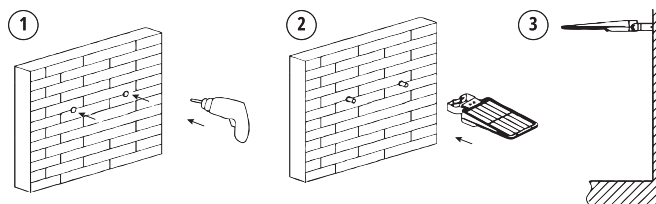


Cordless



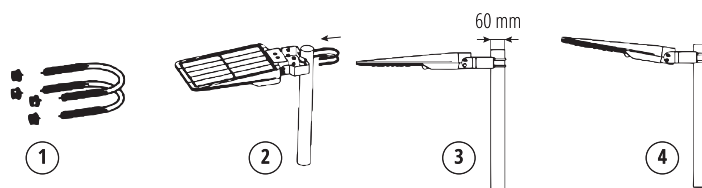
Long lasting

#### INSTALLATION A - ON WALL:



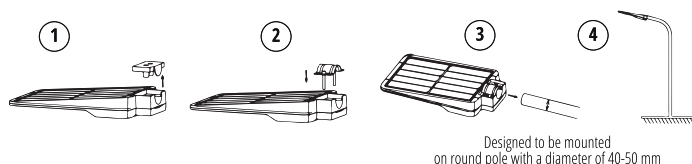
1. Prepare the lamp and tools needed for assembly.
2. Drill two holes of 8mm with depth of 60mm on the wall dimension between holes 105mm (1).
3. Fix the expansion screws into holes (2).
4. Then use wrench to fix the lamp on the wall with expansion screws (3).

#### INSTALLATION B - ON STRAIGHT POLE:



1. Prepare lamp, accessories and tools well firstly.
2. Remove the nut spacer of U-shaped bracket (1).
3. Use the U-shaped bracket to fix the lamp on the pole (2).
4. Loosen the screws at both ends of the bracket and adjust the angle of the lamp as needed, which is 20° adjustable in clockwise direction and 10° adjustable in counterclockwise direction, then tighten the screws (3/4).

#### INSTALLATION C - ON CURVED POLE:



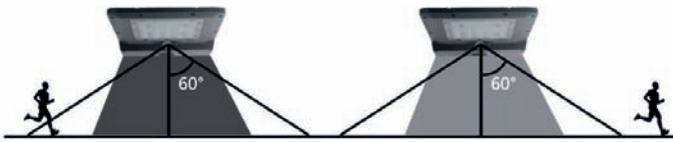
1. Prepare the lamp and tools needed for assembly.
2. Open and remove the housing socket cover (1).
3. Attach the pole attachment piece (2) to the right space.
4. Mount the pole in the prepared hole (3).
5. Adjust the lamp properly and attach its base to the pole (4).

#### OPERATING MODE



**This luminaire has a programmed automatic mode of operation, so that it activates after dusk and deactivates during the dawn.** However, you should first remotely switch on the device by pressing the ON / OFF button which is located as shown in the picture above.

### FIRST 5 HOURS OF LIGHTING:



After motion detection (up to 8 meters), the luminaire automatically lights up to full power (1600LM), then after 20 seconds of no further motion detection it switches to low light.

### AFTER 5 HOURS OF LIGHTING OR WHEN BATTERY CAPACITY IS UNDER 30%:



After motion detection (up to 8 meters), the luminaire automatically lights up to full power (1600LM), then after 20 seconds of no further motion detection it switches to low light. Then after a total of 5 minutes, it turns off completely until another movement is detected.

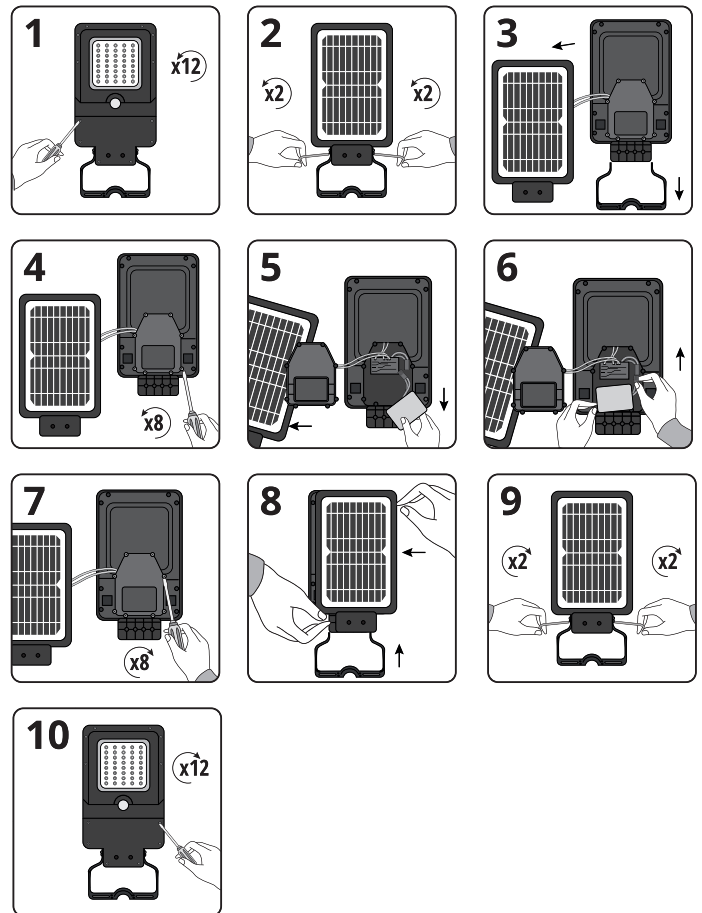
### TECHNICAL NOTES:

1. Please note that there is very little risk of battery explosion due to its lithium-ion construction.
2. The solar panel should be placed in a place where it absorbs enough sunlight.
3. Please note that the maximum lighting time of the LED luminaire will vary depending on the time of absorption and the intensity of sunlight.
4. The luminaire automatically switches on at dusk (unless it is turned off remotely with Off button by the user).
5. The recommended installation height should be 3-5 m higher than the given reference point (eg 3 m above the ground).
6. The luminaire is equipped with an internal, replaceable battery. If you need to replace it, please contact the seller to choose the correct one.
7. In order to activate the luminaire after re-plugging battery, place the solar panel to the direction of sunlight.

### USAGE NOTES:

1. It is not allowed to use a different solar module than the one that is originally included with luminaire. Any changes related to this may result in personal injury and will invalidate the product's warranty.
2. Remember to clean the motion sensor from dust and sediment with a damp cloth from time to time.
3. It is also recommended to periodically clean the solar module shell. A dirty cell can reduce photovoltaic efficiency.
4. In both cases, in order to avoid discoloration on the casing, do not use strong cleaning agents, eg alcohol-based.

### BATTERY REPLACEMENT:



### UTILIZATION:



In accordance with European Directive 2012/19/EU regarding electrical and electronic equipment, the WEEE with label such indicates label, the under need of penalty separate of fine, collection can not of be used thrown out into electrical ordinary and electronic garbage together equipment. with Products other wastes. These products may be harmful to the natural environment and human health, it requires a special form of treatment/recovery / recycling/ disposal. You can find out about the utilization possibilities of a warn out device in the appropriate city or commune office.